

Holley®

SNIPER EFI

Holley just brought EFI within range - introducing Sniper EFI! It's economically priced so you can have all the benefits of EFI and still have money to finish or upgrade the rest of your ride! Perfect for street rods, muscle cars, off road trucks or nearly any carbureted vehicle. Put an end to cold start issues, hesitations, vapor lock, and flooding. Upgrade to Sniper EFI and get the tactical accuracy of EFI today!

- Bolt on carburetor replacement (designed to fit single & dual carb manifolds)
- Throttle body mounted ECU - no extra boxes to mount
- Supports up to 600hp (4 injector version) and 1200hp (8 injector version)
- 4 wire vehicle connection (Battery +, Battery -, Switched ignition & RPM)
- Integrated fuel pressure regulator
- Integrated ignition timing control & coil driver
- Color touchscreen for setup and gauge views
- Calibration Wizard (Answer a few questions about your engine and it creates the base map, then starts tuning on its own!) - No laptop required!
- Self-tuning ECU means you don't have to be a computer/tuning wiz to have EFI!
- Available in base & master kits (Master kits include complete fuel system: fuel pump, filters, feed and return hose and all fittings including fuel tank return line bulkhead fitting.)

**SELF-TUNING EFI
STARTING AT
\$999!**

**COMING
1ST QUARTER
2016!**

**ECU FULLY INTEGRATED
INTO THROTTLE BODY FOR
EASY INSTALLATION!**



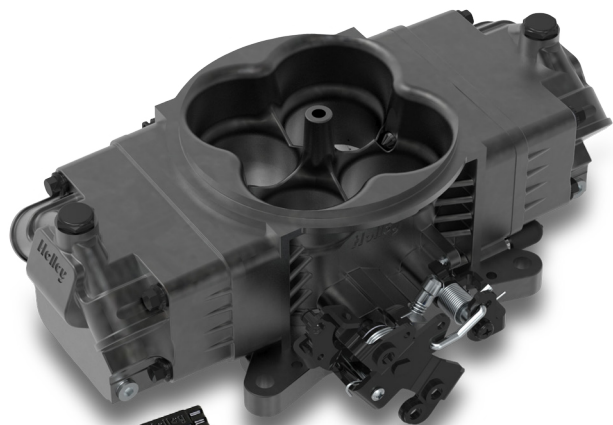
**SET UP AND
MONITOR YOUR EFI WITH
INCLUDED FULL-COLOR
HANDHELD!**

**ALSO AVAILABLE IN
SHINY FINISH!**

SNIPEREFI.COM

TERMINATOR™

STEALTH *EFI*



**CLASSIC CARBURETOR
LOOKS WITH THE
DRIVABILITY OF EFI!**

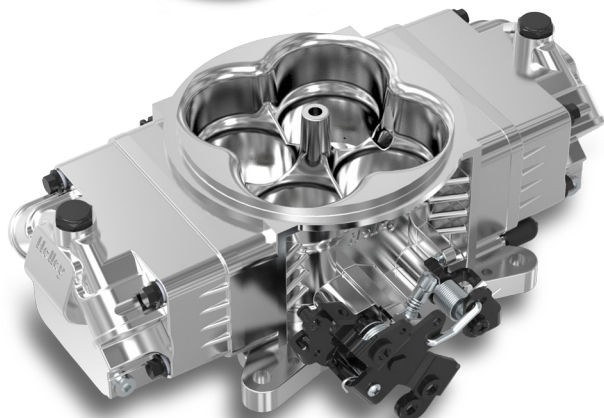
**SAME GREAT SELF-TUNING FEATURES
OF TERMINATOR IN A NEW PACKAGE!**

KITS AVAILABLE WITH TRANS CONTROL!



4BBL THROTTLE BODY FUEL INJECTION

- Fits V8 engines from 250-600 horsepower
- 4150 style 4BBL mounting flange - Bolts on in place of carburetor
- Available in Polished and Hard Core Gray™ finishes
- Fully self-tuning ECU - No laptop required
- Includes full color, 3.5" touch screen LCD for both basic and advanced tuning options
- Timing control option for GM Small Cap HEI and Ford TFI distributors
- Connections for Ford, GM TH350, 700R4 and other transmission linkages
- Optional free software upgrade for full laptop control
- Easy plug and play harnesses with minimal connections
- Full color instructions included with user friendly wiring and fuel system diagrams



**SEE MORE AT
*HOLLEYEFI.COM!***



TERMINATOR™

THROTTLE BODY SYSTEMS *EFI*

- Fits V8 engines from 250-600 horsepower
- 4150 style 4BBL mounting flange - Bolts on in place of carburetor
- Available in Polished and Hard Core Gray™ finishes
- Fully self-tuning ECU - No laptop required
- Includes full color, 3.5" touch screen LCD for both basic and advanced tuning options

**NEW MASTER KITS!
EVERYTHING INCLUDED FOR
A COMPLETE INSTALL!**

MASTER KITS

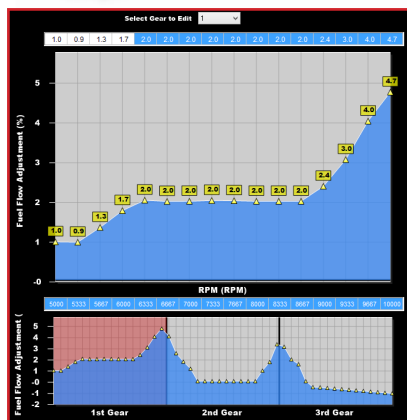
Part#	Description
550-405K	Terminator™ EFI 4bbl Throttle Body Fuel Injection Master Kit V8 4 bbl 950 cfm - 250 to 600 HP - Tumble Polished
550-406K	Terminator™ EFI 4bbl Throttle Body Fuel Injection Master Kit V8 4 bbl 950 cfm - 250 to 600 HP - Hard Core Gray™

- Master kits include complete fuel system: fuel pump, filters, 40 ft. of hose (feed and return), billet regulator and all fittings including fuel tank return line bulkhead fitting

Holley[®] EFI V4 SOFTWARE!



- 16x16 Individual Cylinder Fuel and Timing Tables, independent programmable axes per each cylinder, programmable per gear via Advanced Tuning ICF
 - 16x16 Coil Dwell Table
 - Direct Injection Capability when used with new Holley EFI Direction Injection Driver Module
 - Alpha-N Idle/VE combo based fueling
 - Input/Output ICF:
 - More configurable Output Conditions
 - Programmable timer functionality integrated with outputs
 - Three programmable timing retards, user programmable time or RPM scales. Activated by input or transbrake release
 - Boost Control – Programmable Speed vs Boost axis
 - Data Logging – Dozens of new channels added that allow for extreme depth when performing analysis
 - Compatibility with Davis Technologies Profiler
- Many other new features!



STAGE 8 SETUP

Activate ☒ **Disable**

Nitrous Type: **On/Progressive**

Dry Fuel Delay: **0.00 sec**

ACTIVATION/DEACTIVATION

Minimum RPM: **0 RPM**

Maximum RPM: **0 RPM**

Stage Activation Delay: **0.00 sec**

Stage Duration: **0.00 sec**

Boost Cutoff: **0.00 sec**

PEDALING CONTROL

Pedaling Strategy: **None (Full Throttle)**

TIMING RETARD

Retard Hold After Deactivation: **0.00 sec**

Enable Fixed Timing: **0.00**

Retard X Axis Units: **TIME**

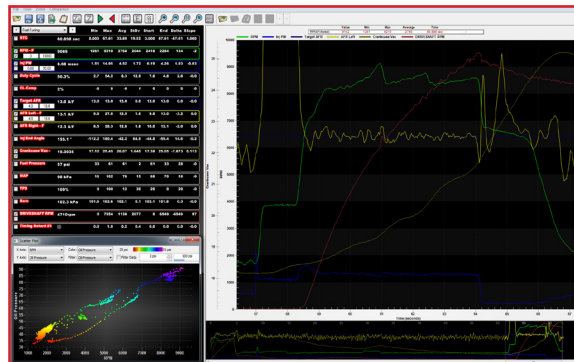
Timing Retard: **0.00**

Time (sec): **0.00 0.00 0.00 0.00 0.00 0.00 0.00 0.00 0.00 0.00 0.00 0.00 0.00 0.00 0.00 0.00**

- **NITROUS UPDATES:**
 - Addition of four stages (8 total)
 - Addition of five inputs (8 total)
 - Addition of four general purpose outputs (8 total)
 - Dry Fuel Delay per stage
 - Addition of "stage deactivation timer" and "override on and off" functions for Top Sportsman/Dragster and Index racing
 - Updated peddling functionality
 - Programmable Timing retard off delay

• **ADVANCED TUNING ICF**
Brand new functionality which allows Timing, Fueling, Boost, Nitrous %, Drive By Wire, and other items to be modified based on almost any parameter. Opens up extensive tuning potential for all applications.

- Eight "1D" 1x16 tables
- Eight "2D" 16x16 tables
- Eight "1D" gear based tables (up to 8 gears)
- Eight "2D" 16x16 gear based tables (up to 8 gears)
- Tables can be activated/ deactivated based on multiple conditions



Improved, easier to use data logger with revised icons, statistical calculations, scatter plot, and more!

INJECTOR AUTO-PHASING

CAM SPECS: **OPEN** **CLOSE** **Duration** **Positive (+) Advance** **Negative (-) Retard**

Intake: **100° BTDC** **50° ABDC** **233.0°**

Exhaust: **67° BTDC** **12.0° BTDC** **233.0°**

Cam Advance/Retard: **0.0°** **115.3°**

Intake Placement: **7.0 inches** **101.0°**

Injector Phase Offset: **0.0°** **79.0°**

Graph Recalculate **Injector End Angle (°)**

MAP (kPa) **Engine RPM**

MAP (kPa)	500	550	600	650	700	750	800	850	900	950	1000
100	79.4	-62.7	-60.5	-60.2	-100.0	-113.7	-121.4	-129.2	-136.9	-144.7	-152.4
110	79.4	-62.7	-60.5	-60.2	-100.0	-113.7	-121.4	-129.2	-136.9	-144.7	-152.4
120	79.4	-62.7	-60.5	-60.2	-100.0	-113.7	-121.4	-129.2	-136.9	-144.7	-152.4
130	79.4	-62.7	-60.5	-60.2	-100.0	-113.7	-121.4	-129.2	-136.9	-144.7	-152.4
140	79.4	-62.7	-60.5	-60.2	-100.0	-113.7	-121.4	-129.2	-136.9	-144.7	-152.4
150	79.4	-62.7	-60.5	-60.2	-100.0	-113.7	-121.4	-129.2	-136.9	-144.7	-152.4
160	79.4	-62.7	-60.5	-60.2	-100.0	-113.7	-121.4	-129.2	-136.9	-144.7	-152.4
170	79.4	-62.7	-60.5	-60.2	-100.0	-113.7	-121.4	-129.2	-136.9	-144.7	-152.4
180	79.4	-62.7	-60.5	-60.2	-100.0	-113.7	-121.4	-129.2	-136.9	-144.7	-152.4
190	79.4	-62.7	-60.5	-60.2	-100.0	-113.7	-121.4	-129.2	-136.9	-144.7	-152.4
200	79.4	-62.7	-60.5	-60.2	-100.0	-113.7	-121.4	-129.2	-136.9	-144.7	-152.4
210	79.4	-62.7	-60.5	-60.2	-100.0	-113.7	-121.4	-129.2	-136.9	-144.7	-152.4
220	79.4	-62.7	-60.5	-60.2	-100.0	-113.7	-121.4	-129.2	-136.9	-144.7	-152.4
230	79.4	-62.7	-60.5	-60.2	-100.0	-113.7	-121.4	-129.2	-136.9	-144.7	-152.4
240	79.4	-62.7	-60.5	-60.2	-100.0	-113.7	-121.4	-129.2	-136.9	-144.7	-152.4
250	79.4	-62.7	-60.5	-60.2	-100.0	-113.7	-121.4	-129.2	-136.9	-144.7	-152.4
260	79.4	-62.7	-60.5	-60.2	-100.0	-113.7	-121.4	-129.2	-136.9	-144.7	-152.4
270	79.4	-62.7	-60.5	-60.2	-100.0	-113.7	-121.4	-129.2	-136.9	-144.7	-152.4
280	79.4	-62.7	-60.5	-60.2	-100.0	-113.7	-121.4	-129.2	-136.9	-144.7	-152.4
290	79.4	-62.7	-60.5	-60.2	-100.0	-113.7	-121.4	-129.2	-136.9	-144.7	-152.4
300	79.4	-62.7	-60.5	-60.2	-100.0	-113.7	-121.4	-129.2	-136.9	-144.7	-152.4
310	79.4	-62.7	-60.5	-60.2	-100.0	-113.7	-121.4	-129.2	-136.9	-144.7	-152.4
320	79.4	-62.7	-60.5	-60.2	-100.0	-113.7	-121.4	-129.2	-136.9	-144.7	-152.4
330	79.4	-62.7	-60.5	-60.2	-100.0	-113.7	-121.4	-129.2	-136.9	-144.7	-152.4
340	79.4	-62.7	-60.5	-60.2	-100.0	-113.7	-121.4	-129.2	-136.9	-144.7	-152.4
350	79.4	-62.7	-60.5	-60.2	-100.0	-113.7	-121.4	-129.2	-136.9	-144.7	-152.4
360	79.4	-62.7	-60.5	-60.2	-100.0	-113.7	-121.4	-129.2	-136.9	-144.7	-152.4
370	79.4	-62.7	-60.5	-60.2	-100.0	-113.7	-121.4	-129.2	-136.9	-144.7	-152.4
380	79.4	-62.7	-60.5	-60.2	-100.0	-113.7	-121.4	-129.2	-136.9	-144.7	-152.4
390	79.4	-62.7	-60.5	-60.2	-100.0	-113.7	-121.4	-129.2	-136.9	-144.7	-152.4
400	79.4	-62.7	-60.5	-60.2	-100.0	-113.7	-121.4	-129.2	-136.9	-144.7	-152.4
410	79.4	-62.7	-60.5	-60.2	-100.0	-113.7	-121.4	-129.2	-136.9	-144.7	-152.4
420	79.4	-62.7	-60.5	-60.2	-100.0	-113.7	-121.4	-129.2	-136.9	-144.7	-152.4
430	79.4	-62.7	-60.5	-60.2	-100.0	-113.7	-121.4	-129.2	-136.9	-144.7	-152.4
440	79.4	-62.7	-60.5	-60.2	-100.0	-113.7	-121.4	-129.2	-136.9	-144.7	-152.4
450	79.4	-62.7	-60.5	-60.2	-100.0	-113.7	-121.4	-129.2	-136.9	-144.7	-152.4
460	79.4	-62.7	-60.5	-60.2	-100.0	-113.7	-121.4	-129.2	-136.9	-144.7	-152.4
470	79.4	-62.7	-60.5	-60.2	-100.0	-113.7	-121.4	-129.2	-136.9	-144.7	-152.4
480	79.4	-62.7	-60.5	-60.2	-100.0	-113.7	-121.4	-129.2	-136.9	-144.7	-152.4
490	79.4	-62.7	-60.5	-60.2	-100.0	-113.7	-121.4	-129.2	-136.9	-144.7	-152.4
500	79.4	-62.7	-60.5	-60.2	-100.0	-113.7	-121.4	-129.2	-136.9	-144.7	-152.4

16x16 Injector End Angle Table, with automated "Injector Auto-Phasing" calculation table

Cylinder #1

Back Graph **Copy Axes to All Cylinders**

X Axis: **RPM** Y Axis: **MAP**

Fuel Correction [%]

MAP (kPa)	500	550	600	650	700	750	800	850	900	950	1000
100	1.0	1.2	1.4	1.6	1.8	2.0	2.2	2.4	2.6	2.8	3.0
110	1.0	1.2	1.4	1.6	1.8	2.0	2.2	2.4	2.6	2.8	3.0
120	1.0	1.2	1.4	1.6	1.8	2.0	2.2	2.4	2.6	2.8	3.0
130	1.0	1.2	1.4	1.6	1.8	2.0	2.2	2.4	2.6	2.8	3.0
140	1.0	1.2	1.4	1.6	1.8	2.0	2.2	2.4	2.6	2.8	3.0
150	1.0	1.2	1.4	1.6	1.8	2.0	2.2	2.4	2.6	2.8	3.0
160	1.0	1.2	1.4	1.6	1.8	2.0	2.2	2.4	2.6	2.8	3.0
170	1.0	1.2	1.4	1.6	1.8	2.0	2.2	2.4	2.6	2.8	3.0
180	1.0	1.2	1.4	1.6	1.8	2.0	2.2	2.4	2.6	2.8	3.0
190	1.0	1.2	1.4	1.6	1.8	2.0	2.2	2.4	2.6	2.8	3.0
200	1.0	1.2	1.4	1.6	1.8	2.0	2.2	2.4	2.6	2.8	3.0
210	1.0	1.2	1.4	1.6	1.8	2.0	2.2	2.4	2.6	2.8	3.0
220	1.0	1.2	1.4	1.6	1.8	2.0	2.2	2.4	2.6	2.8	3.0
230	1.0	1.2	1.4	1.6	1.8	2.0	2.2	2.4	2.6	2.8	3.0
240	1.0	1.2	1.4	1.6	1.8	2.0	2.2	2.4	2.6	2.8	3.0
250	1.0	1.2	1.4	1.6	1.8	2.0	2.2	2.4	2.6	2.8	3.0
260	1.0	1.2	1.4	1.6	1.8	2.0	2.2	2.4	2.6	2.8	3.0
270	1.0	1.2	1.4	1.6	1.8	2.0	2.2	2.4	2.6	2.8	3.0
280	1.0	1.2	1.4	1.6	1.8	2.0	2.2	2.4	2.6	2.8	3.0
290	1.0	1.2	1.4	1.6	1.8	2.0	2.2	2.4	2.6	2.8	3.0
300	1.0	1.2	1.4	1.6	1.8	2.0	2.2	2.4	2.6	2.8	3.0
310	1.0	1.2	1.4	1.6	1.8	2.0	2.2	2.4	2.6	2.8	3.0
320	1.0	1.2	1.4	1.6	1.8	2.0	2.2	2.4	2.6	2.8	3.0
330	1.0	1.2	1.4	1.6	1.8	2.0	2.2	2.4	2.6	2.8	3.0
340	1.0	1.2	1.4	1.6	1.8	2.0	2.2	2.4	2.6	2.8	3.0
350	1.0	1.2	1.4	1.6	1.8	2.0	2.2	2.4	2.6	2.8	3.0
360	1.0	1.2	1.4	1.6	1.8	2.0	2.2	2.4	2.6	2.8	3.0
370	1.0	1.2	1.4	1.6	1.8	2.0	2.2	2.4	2.6	2.8	3.0
380	1.0	1.2	1.4	1.6	1.8	2.0	2.2	2.4	2.6	2.8	3.0
390	1.0	1.2	1.4	1.6	1.8	2.0	2.2	2.4	2.6	2.8	3.0
400	1.0	1.2	1.4	1.6	1.8	2.0	2.2	2.4	2.6	2.8	3.0
410	1.0	1.2	1.4	1.6	1.8	2.0	2.2	2.4	2.6	2.8	3.0
420	1.0	1.2	1.4	1.6	1.8	2.0	2.2	2.4	2.6	2.8	3.0
430	1.0	1.2	1.4	1.6	1.8	2.0	2.2	2.4	2.6	2.8	3.0
440	1.0	1.2	1.4	1.6	1.8	2.0	2.2	2.4	2.6	2.8	3.0
450	1.0	1.2	1.4	1.6	1.8	2.0	2.2	2.4	2.6	2.8	3.0
460	1.0	1.2	1.4	1.6	1.8	2.0	2.2	2.4	2.6	2.8	3.0
470	1.0	1.2	1.4	1.6	1.8	2.0	2.2	2.4	2.6	2.8	3.0
480	1.0	1.2	1.4	1.6	1.8	2.0	2.2	2.4	2.6	2.8	3.0
490	1.0	1.2	1.4	1.6	1.8	2.0	2.2	2.4	2.6	2.8	3.0
500	1.0	1.2	1.4	1.6	1.8	2.0	2.2	2.4	2.6	2.8	3.0

16x16 Individual Cylinder Fueling Tables, independent programmable axes per each cylinder, programmable per gear via Advanced Tuning ICF

ANODIZED BILLET LS THROTTLE BODIES

- TPS clocker [patent pending] allows the TPS to be rotated back into the ECU's required idle voltage range. Modified engines no longer suffer from problems related to TPS voltage!
- Idle bleed allows adjustment of your idle without affecting throttle position or TPS voltages at idle!
- PCV passage valve closes to accommodate forced induction applications!
- Cruise control provision built in for cruise control cable
- Fits the following intake manifolds: Stock LS2, Stock LS3, Stock LS7, Holley LS Mid-Rise, Holley 95mm Hi-Ram, Fast™ LSX, Edelbrock Pro-Flo XT using 4 bolt TBs & most other 90 through 95mm LS intakes using 4 bolt TBs

112-589 Billet 90mm LS Throttle Body w/low RPM Taper

112-585 Billet 95mm LS Throttle Body w/low RPM Taper

112-581 Billet 105mm LS Throttle Body w/low RPM Taper

112-583 Billet 105mm LS Throttle Body w/straight bore



HOLLEY EFI MULTI-PORT 1000 CFM THROTTLE BODY - RACE

- 1-3/4" throttle bore
- Integrated TPS, IAC, and Air Temperature Sensor
- Hi Flow IAC passages for large cubic inch engines for idle stability
- Uses a non-contact magnetic hall effect TPS sensor
- Includes (1) 3/8" and (1) 3/16" full manifold vacuum ports
- PTFE coated throttle shaft rides in oil impregnated bronze bushing for smooth actuation
- Dedicated race only throttle lever
- Stainless steel adjustable secondary link; factory set to 1:1 actuation
- High quality die cast aluminum for strength and weight reduction

**SAME STYLE THROTTLE BODY USED IN
ARCA IS NOW AVAILABLE FOR EVERYONE!**

112-602 Universal race series 4bbl 1000CFM Throttle body - 4150 flange



HOLLEY EFI MULTI-PORT 1000 CFM THROTTLE BODY - STREET/STRIP

- Integrated TPS, IAC, and Air Temp Sensor
- Hi Flow IAC passages for large cubic inch engines for idle stability
- Ford Transmission kick down lever
- Integrated GM 700R4 transmission kick down location (no adapters needed)
- All necessary vacuum ports (1) timed spark, (2) 3/8" and (2) 3/16" full manifold vacuum ports
- 1.75" throttle plates mounted to PTFE coated throttle shafts for high flow and a smooth operation

112-587 Cast MPFI Throttle Body - Hard Core Gray™ - 4150 flange

112-588 Cast MPFI Throttle Body - Tumble Polished - 4150 flange

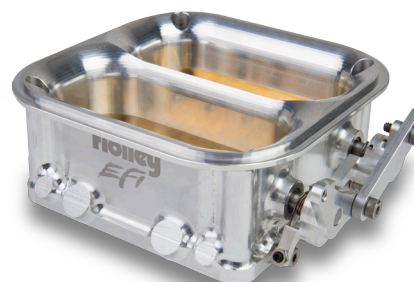


HIGH END RACE SERIES THROTTLE BODIES

- Lightweight billet design (4500 pattern)
- Dual throttle blades for maximum airflow
- Shafts ride on roller bearings for ultra-smooth throttle actuation.
- Flows 2550 CFM
- Versions with and without supplemental injector provisions (4 injectors per TB and rails)
- Non-contact magnetic TPS sensor

112-592 4500 Big Dual w/ EFI fuel rails

112-593 4500 Big Dual "Dry" (not machined for injectors)



105MM THROTTLE BODY - RACE

- Lightweight billet design (3.5" square bolt pattern)
- Adjustable idle and WOT stops
- Includes billet adapter for 4" tubing
- Indexable throttle lever for a variety of installations
- Non-contact magnetic TPS sensor
- 2 versions: V-band or dual o-ring connections

112-590 105 MM Mono blade throttle body - V-band style

112-591 105 MM Mono blade throttle body - Dual o-ring style



HI-RAM INTAKE MANIFOLD FOR GM 6.2L LT1

- The base is designed to be modular in configuration to accept a wide range of available tops and to be attractive to builders and fabricators as a foundation for custom induction systems
- Increased runner taper and cross-sectional area designed to perform well on a wide variety of engine configurations
- Increased runner wall thickness near the entries to allow for custom porting
- Intakes with fuel injector provisions include fuel rails machined for -8AN O-ring fittings with passages large enough to accommodate high fuel flows and dampen pressure pulsations in the fuel system
- 3500-8000+ RPM band

Holley *EFI*



300-140	LT1 - EFI Hi-Ram, 1x105MM Throttle body w/ injector provisions
300-141	LT1 - EFI Hi-Ram, 1x95MM Throttle body w/ injector provisions
300-142	LT1 - EFI Hi-Ram, 1x105MM Throttle body w/o injector provisions
300-143	LT1 - EFI Hi-Ram, 1x95MM Throttle body w/o injector provisions
300-236	LT1 - EFI Hi-Ram, base only w/ injector provisions
300-237	LT1 - EFI Hi-Ram, base only w/o injector provisions
300-207	LT1 - 2x4150, up to 1.75" throttle bores (sideways mount 2x4150, inline mount 4160) - Top only

SNIPER HI-RAM FABRICATED INTAKE MANIFOLDS

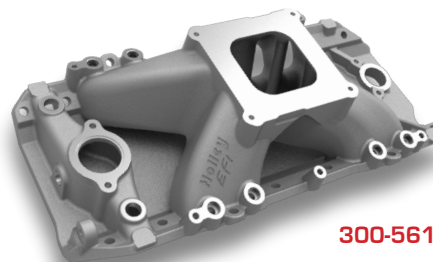
- Budget-friendly fabricated intake manifolds for GM LS, Ford Mod Motor, Small Block Chevy and Small Block Ford applications
- 3mm (1/8") thick T6061 Sheet Aluminum construction, more durable than competitive intakes
- Available in 92mm and 102mm bore Throttle Body Openings
- 100% TIG welded
- Available for EFI and Carbureted applications with custom Holley Sniper logo
- EFI Intakes include 3/8" Fuel rail kits (Sniper logo laser engraved)
- Runner lengths with tapered top on EFI intakes designed to increase velocity and more evenly distribute airflow to all 8 cylinders

**BUDGET-FRIENDLY FABRICATED
INTAKE MANIFOLDS FOR LS, SB CHEVY
& SB FORD ENGINES IN CARBURETED
AND EFI VERSIONS!**



BIG BLOCK CHEVY INTAKE MANIFOLDS

- Open plenum/single plane design
- No EGR provisions
- Carburetor mounting flange
- Includes fuel rails and mounting brackets
- Designed for today's larger cubic inch big block Chevy race engines
- Perfect for hard core drag racers in the NHRA Super Comp, Super Gas, and Street classes as well as IHRA Quick Rod, Super Rod, and Hot Rod categories



300-561

Holley *EFI*



EFI MANIFOLDS

- 300-561** BB Chevy, oval port heads, 3000-7500 power band - 4150 style flange
- 300-562** BB Chevy, oval port heads, 3000-7500 power band - 4500 Style Flange
- 300-563** BB Chevy, rectangular port heads, 3500-8000 power band - 4150 style flange
- 300-564** BB Chevy, rectangular port heads, 3500-8000 power band - 4500 Style Flange
- 534-223** Fuel Rail kit for Holley EFI Big Block Chevy Intake Manifolds 300-561, 300-562, 300-563, and 300-564

CARBURETED MANIFOLDS

- 7620** BB Chevy, oval port heads, 3000-7500 power band - 4150 style flange
- 7622** BB Chevy, rectangular port heads, 3000-7500 power band - 4150 style flange
- 7621** BB Chevy, oval port heads, 3000-7500 power band - 4500 Style Flange
- 7623** BB Chevy, rectangular port heads, 3500-8000 power band - 4500 Style Flange

HOLLEY EFI ANALOG-STYLE GAUGES

Holley EFI gauges are compatible with all Terminator, HP, and Dominator ECU's. These analog-style gauges will look great in any Holley EFI equipped vehicle. CAN-BUS communication allows the gauges to daisy chain using the included stereo cables, making installation quick and clean. The required gauge module allows plug and play communication between the ECU and gauges, through a one-wire ECU connection. All gauges fit 2-1/16" mounting hole - larger sizes and additional applications coming soon!



- 554-130** Gauge Module (One required per set of CAN gauges)
- 553-126** Black 2-1/16" Volt Gauge 0-18 CAN
- 553-127** Black 2-1/16" Oil Pressure Gauge 0-100psi CAN
- 553-128** Black 2-1/16" Water Temp Gauge 120-260 °F CAN
- 553-129** Black 2-1/16" Fuel Pressure Gauge 0-100psi CAN
- 553-130** Black 2-1/16" Vacuum/Boost Gauge 30inHg-30 psi CAN
- 553-131** Black 2-1/16" Air/Fuel Gauge - Left 10-18 CAN
- 553-132** Black 2-1/16" Air/Fuel Gauge - Right (for Dominator systems only) 10-18 CAN
- 553-133** Black 2-1/16" Fuel Level Gauge - Programmable

Holley *EFI*

6.2L LS SPARK PLUG WIRE SETS

- 8mm Plug Wire Size
- Offers low Ohms per foot resistance while maintaining very high noise suppression
- Available in three other colors (Black, Grey and Red)
- Specifically designed to work with Hooker Blackheart shorty style headers and stock mount LS coil packs



- 561-100** Black with Black 45° boots for 2010-15 Camaro SS 6.2L V8 shorty headers
- 561-101** Grey with Black 45° boots for 2010-15 Camaro SS 6.2L V8 shorty headers
- 561-102** Red with Grey 45° boots for 2010-15 Camaro SS 6.2L V8 shorty headers

HOLLEY EFI DUAL SYNC DISTRIBUTORS

- Plug and Play with Holley EFI
- Includes both crank and cam sensors to support sequential EFI operation
- Hall Effect sensor design provides precise timing control and noise immunity
- CNC machined billet aluminum housing
- Integrated LEDs allow for easy setup
- Available for popular applications

Holley *EFI*



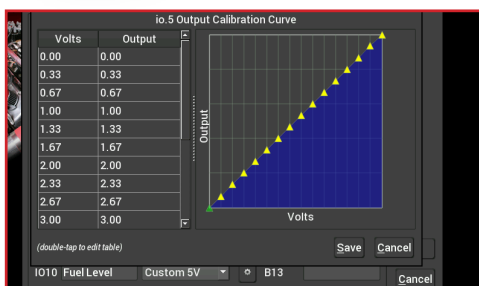


HOLLEY STAND-ALONE DIGITAL DASH

Holley's stand-alone digital dash works with just about any engine. It is ideal for anything from a JR dragster to Sportsman racing. It is also equally at home in a daily driver, or a show winning roadster. No need for EFI!



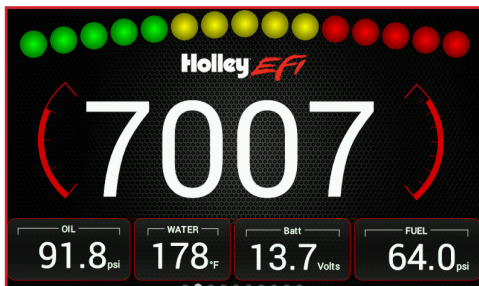
553-109 Holley Digital Dash



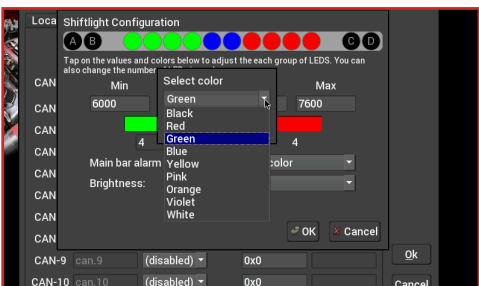
Custom Sensor Scaling

Local I/O	CAN Devices	Vehicle	Misc
Name	Type	Pin	Notes
I01 NOS Pressure	Custom 5V	B1	0-1600 psi
I02 Fuel Pressure	Custom 5V	B3	0-15 psi
I03 Engine RPM	Engine RPM	B5/B26	Yellow wire
I04 Bottle Heater	I:SW to 12V	B7	SSRelay3/grn
I05 Water Pump	I:SW to GND	B8	SSRelay1/pnk
I06 io.6	(disabled)	B9	
I07 Oil Pressure	100psi Oil Pres	B10	3 wire cable
I08 Water Temp	Holley CTS	B11	2 wire cable
I09 Air Temp	Holley MAT	B12	2 wire cable
I010 Fuel Level	Custom Ohms	B13	Tan

I/O Configuration Screen



Sample Dash Screen



LED Light Bar Configuration

- Compact, customizable dash for use in a variety of applications
- 7" low glare, high brightness, high contrast, full color touch screen for easy viewing even in full sun
- 800x480 resolution with auto brightness
- Operating voltage min 8V - 20V
- Weather proof aluminum housing with flexible mounting options
- Completely customizable display
- Multiple gauge & indicator types with limitless customization options
- Quickly toggle between multiple active screens (tune, warm-up, race, drive, etc.)
- Virtual Switch Panel (replaces the need for physical switches)
- Retains the same gauge customization flexibility as the EFI dash, but now allows use with any vehicle
- Powerful data log software provides in-depth analysis (10 samples/sec) of all inputs and outputs, including the integrated 3 axis accelerometer and USB GPS.
- A variety of additional sensors are available for use with the dash, including fuel pressure, nitrous pressure, boost, WBO2 controllers, and more!
- User defined alarms for any input
- Configurable progressive shift lights and light bar
- Expandable internal storage on micro SD card
- Support for USB devices such as 554-140 (USB speedometer/GPS)
- Upgradable with future software enhancements

Inputs:

- 2 are Digital Speed (Frequency) capable
- 5 are 0-5 Volt capable
- 2 are Thermistor capable
- All 10 are +12v Switched capable
- All 10 are Ground Switched capable
- 1 is RPM (Coil -) capable
- 1 is Fuel level capable

Outputs:

- 2 are capable of being Switched ground outputs (max 2A) (turn solid state relays on and off - fuel pump, fans, etc...)
- Dash retains the same gauge customization options as the EFI dash, so the user experience is the same, but now the displayed information comes through the I/O adapter and sensors.
- Data log software is the same as used in our EFI software. Logs can be started and stopped via the dash, and are saved to the provided USB memory stick. Logs can be played back on the dash or reviewed on a PC via the log view software.

LED LIGHT BAR



553-107 LED light bar

- Available LED Light Bar is fully programmable via the dash and includes 4 customizable LED warning indicators in addition to the 10 LED shift light. With auto brightness, 10 colors to choose from, and multiple flash rates, the Holley EFI LED Light Bar is a perfect addition to any vehicle.
- Includes roll-bar & in-dash mounting kits

Holley *EFI*



CRANK TRIGGER KITS

- Engineered to provide an accurate crank speed & position signal to Holley EFI systems in the most-demanding, high horsepower, racing applications.
- Designed for use on early model Chevy applications using a standard ATI or Fluidamper "style" balancer up to 7-1/4" in Diameter.
- Crank angle is measured every 10 degrees as opposed to 45 degrees for a standard 4-Magnet, MSD "style" Crank trigger.
- All billet, 6061-T6 aluminum sensor mounting brackets with "bright-dipped black" anodized finish & Laser etched Holley EFI logo
- Custom 3-wire, ferrous-target, Hall-effect sensor with M12X1 mm threads for finer gap adjustment
- 8" diameter, 1/4" thick billet steel 36-1 tooth, crank wheel with Black Zinc Oxide finish for superior corrosion resistance & striking good looks
- All Grade 8 & Mil. Spec mounting hardware

556-113 Big Block Chevy, 8", 36-1 tooth crank trigger kit

556-116 Small Block Chevy, 8", 36-1 tooth crank trigger kit

556-115 Small Block Ford, 7.25", 36-1 crank trigger kit

556-118 Big Block Ford, 8", 36-1 crank trigger kit

CAM SYNC KITS

- Includes 3 wire hall-effect sensor (8-20 volts), anodized billet aluminum bracket, mounting hardware, mating connector, and stainless steel 1/4"-20 "flying magnet" screw w/ high-temp, rare-earth magnet
- Unique t-nut and bracket design allows for complete sensor adjustment from the outside of the bracket with a single jam nut
- Designed to provide a plug-&-play cam position signal to Holley EFI systems; Also compatible with any EFI system which can read a digital, square-wave cam input signal
- Bracket assembly can be mounted in up to five locations to accommodate various cam-drive systems and front accessory drive configurations

556-114 BB Chevy Cam Sync Kit w/ Bracket (Standard Cam Height)

556-119 SB Chevy Cam Sync Kit w/ Bracket (Standard Cam Height)

556-120 BB Chevy Cam Sync Kit w/ Bracket (+.400 raised cam)

556-121 BB Chevy Cam Sync Kit w/ Bracket (+.600/+1.000 raised cam)

556-123 Universal Cam Sync Kit w/ Bracket (For use with Small & Big Block Ford, etc.)



SMALL BLOCK CHEVY TRI-POWER SYSTEMS

- Vintage Weiand dual plane mid-rise 3x2 intake manifold
- (2) Holley 325 CFM outboard carbs
- (1) Holley 350 CFM center carb w/ electric choke
- High quality steel fuel lines
- Progressive throttle linkage kit
- Classic-styled chrome air cleaners with reusable air filters
- Fits 1955-1986 Chevrolet Small Block Engines

300-521 3x2 Small Block Chevy Intake and Carburetor set - Dichromate Finish

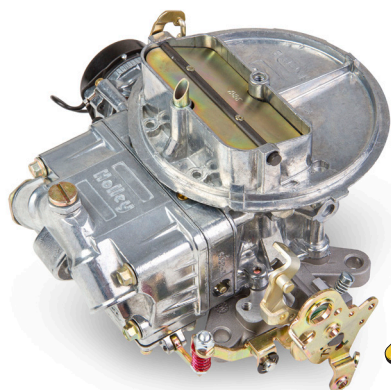
300-522 3x2 Small Block Chevy Intake and Carburetor set - Shiny Finish

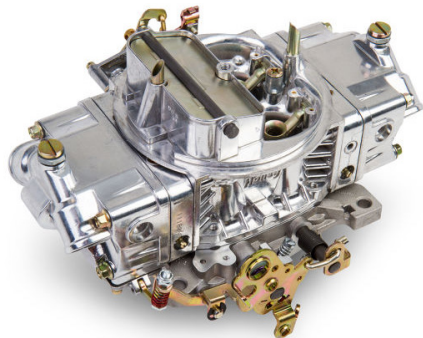
STREET AVENGER™ 2BBL CARBS

- Limited lifetime warranty - Guaranteed to be free from defects in material and workmanship for the life of the product!

**AVAILABLE IN 350 & 500CFM WITH
ELECTRIC CHOKE!**

**POPULAR FEATURES FOUND IN
STREET AVENGER 4BBL!**



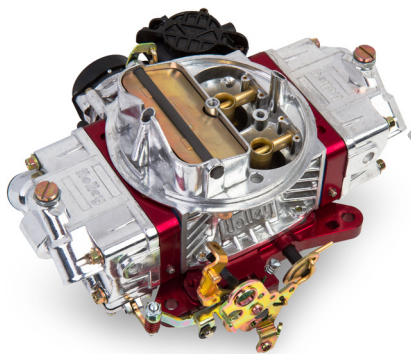


DOUBLE PUMPER® CARBS
NOW AVAILABLE IN ALUMINUM
FROM 600 TO 850CFM!



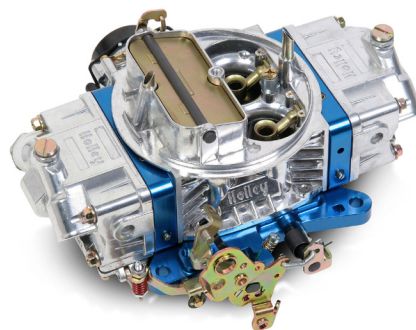
**ULTRA STREET AVENGER™ &
ULTRA DOUBLE PUMPER® CARBS**

**ALL THE SAME GREAT FEATURES AS
ALL ULTRA STREET CARBS!**



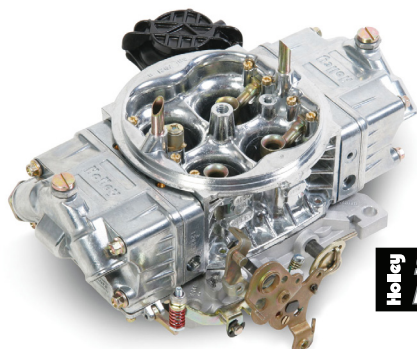
Holley
ULTRA
STREET AVENGER™

**NOW IN
870
CFM!**



Holley
ULTRA
DOUBLE PUMPER®

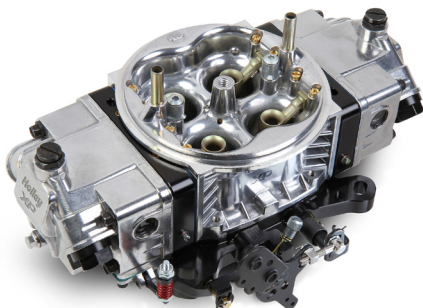
**NOW IN
850
CFM!**



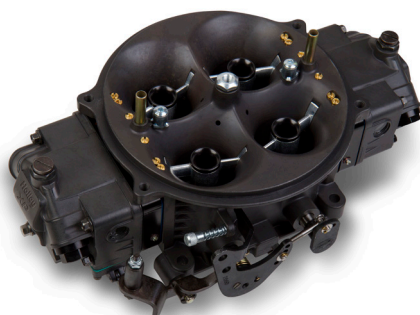
ALUMINUM STREET HP™ CARBS
**FEATURES THE SAME MAIN BODY DESIGN AS
THE PROVEN XP RACE SERIES CARBS IN A
STREET-FRIENDLY PACKAGE!**

AVAILABLE IN 650 TO 950CFM!

COMING SOON!



ALUMINUM ULTRA XP CARBS
**NOW AVAILABLE IN CIRCLE TRACK
AND METHANOL CALIBRATIONS!**



DOMINATOR® GEN 3 CARBS
- 2X4 & METHANOL SERIES
**NOW AVAILABLE IN 2X4 AND
METHANOL CALIBRATIONS!**



DOMINATOR® SP CARBS

- Designed for use on Drag race, Pro Street, or any high horsepower engines
- Fully machined from venturi throat to throttle bore for predictable & repeatable performance
- Metering blocks feature improved durability, true gasket sealing and tuneability
- Notched float and jet extensions are factory installed
- 5/8-18 inlet threads and standard 4500 fuel inlet spacing
- Factory ready TPS mounting points for use with data acquisition systems (Holley TPS P/N 534-214 available)
- Progressive secondary link installed for perfect off the line launches. No linkage parts under the carburetor (1:1 wire link included in kit)



GREAT DOMINATOR PERFORMANCE AT A BUDGET-MINDED PRICE!

Holley®
DOMINATOR SP

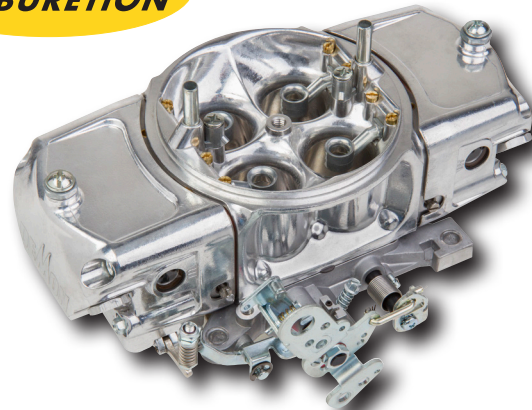
0-80688	1050 CFM, 2 circuit 1x4, 1.690" venturii, 2.0" throttle bore - Tumble polished - Gas
0-80689	1050 CFM, 3 circuit 1x4, 1.690" venturii, 2.0" throttle bore - Tumble polished - Gas
0-80690	1150 CFM, 3 circuit 1x4, 1.830" venturii, 2.0" throttle bore - Tumble polished - Gas

MODULAR DEMON CARBS

NOW IN ALUMINUM FROM 650 TO 850CFM!



- Classic modular carburetor performance and tune-ability with modern looks!
- Contoured air entries designed to maximize air flow
- Raised venturii for better fuel signal
- All aluminum construction (Now 40% lighter than original Demons!)
- Changeable 4 emulsion metering blocks for better performance and tune-ability
- Re-designed throttle lever with integrated Ford A/T kickdown, 700 R4 mounting holes, and ability to mount brackets for Chrysler vehicles
- Black PTFE shafts for smooth operation and corrosion protection
- Completely re-engineered and re-calibrated for better drivability and tune-ability
- Large capacity fuel bowls with dual sight glasses for easy no-mess fuel level adjustments (Fuel line center-to-center distance now the same as Holley® & QFT® for more fuel line options)
- Raised Idle and high speed bleed bosses for improved airflow



SCREAMIN' DEMON™

MIGHTY DEMON™

ROAD DEMON™
COMING SPRING 2016!

SPEED DEMON™
COMING SPRING 2016!

MIGHTY-MITE FUEL PUMPS

- They're big on performance, but small in size!
- 12 volt operation
- Reliable solid state design provides longer life
- Compatible with all fuels and fuel additives (gas, diesel, blended alcohol, ethanol, e-85)
- Simple 2 wire hookup
- Self-priming and regulating
- Quiet operation - 65db
- Great for carbureted trucks, cars, generators and agricultural equipment - also makes a great transfer pump
- Engineered and matched performance with Holley®, Demon®, Quick Fuel® and Edelbrock® carburetors

Holley®
MIGHTY MITE™
FUEL PUMPS™



12-426	25 GPH, 1.5-4 PSI, 12" dry lift, up to 300HP naturally aspirated
12-427	32 GPH, 4-7 PSI, 12" dry lift, up to 400HP naturally aspirated
12-428	34 GPH, 7-10 PSI, 12" dry lift, up to 400HP naturally aspirated



UNIVERSAL IN-TANK RETRO-FIT FUEL MODULES

Now you can convert your factory tank, fuel cell or custom tank to an in-tank, returnless EFI fuel system quickly and easily! And - add the benefits of a Holley Hydramat in the process! The conversion is easily accomplished with basic tools and requires no welding or fabrication. Holley's innovative clamping system and integrated turbine pump makes it easy. Once installed, hook up a single fuel line and wire power/ground to the billet fuel pump hanger and you're off and running! NO return lines! NO pressure regulators! NO hassle!

Two pump sizes are available to handle even the most demanding fuel requirements and come preset to 60 psi.

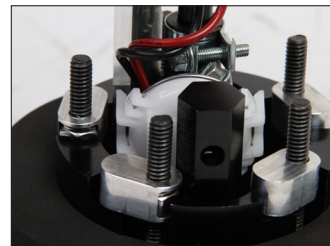
RETURNLESS STYLE

- The easiest way to convert your vehicle to an in-tank, RETURNLESS EFI fuel system
- Eliminates the need for return line and conventional fuel pressure regulator
- Installs in any fuel tank from 5 1/2" to 12" deep
- Includes innovative Holley Hydramat to ensure consistent fuel supply
- Black anodized aluminum construction with 1/4" NPT fittings
- Ideal for Terminator, Sniper TBI conversions or LS engine swaps
- Two different fuel pumps available to match your requirements
 - 255LPH or 400LPH

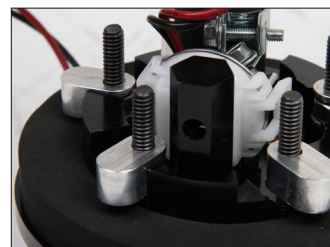
12-131 Drop-In Retrofit EFI fuel system - 255LPH returnless

12-133 Drop-In Retrofit EFI fuel system - 400LPH returnless

**ELIMINATES THE NEED
FOR A RETURN LINE!**



Swingout mounting clamps make installation quick & easy with less drilling!



**THE SIMPLE SOLUTION
FOR CONVERTING YOUR
RIDE TO AN IN-TANK
EFI FUEL SYSTEM!**



RETURN STYLE

Want to run a return line and conventional adjustable regulator? Holley has you covered there as well. This module has the same great features of the returnless version, but without the built in fuel pressure regulators.

- The easiest way to convert your vehicle to an in-tank, EFI fuel system
- Installs in any fuel tank from 5 1/2" to 12" deep
- Includes innovative Holley Hydramat to ensure consistent fuel supply
- Black anodized aluminum construction with 1/4" NPT fittings
- Ideal for Terminator, Sniper, Atomic TBI conversions or LS engine swaps

12-130 Drop-In Retrofit EFI fuel system - 255LPH

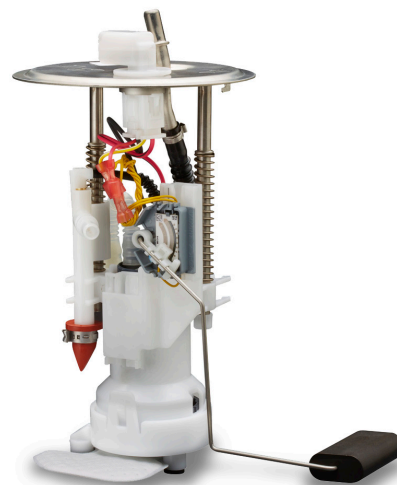
12-132 Drop-In Retrofit EFI fuel system - 400LPH



DROP-IN FUEL MODULE ASSEMBLIES

These drop-in modules cover a wide range of passenger, sports car, truck & SUV models. They are designed to the highest quality standards to provide increased performance and fuel efficiency for most stock, turbo and supercharged applications capable of supporting 600+ horsepower.

Holley®



- Complete drop-in fuel module assemblies for a wide range of passenger, sports car, truck & SUV models
- Integrated fuel storage and filtration technology
- Built in, pre-calibrated fuel level sensors
- Plug and play wiring harnesses
- Designed for return line and pulse width modulation (PWM)

IN-TANK FUEL PUMPS

These electric in-tank fuel pumps are designed to the highest quality standards to provide increased performance and fuel efficiency for most stock, turbo and supercharged applications.

- OE proven design
- Offering available for E85 use
- Lightweight and compact
- In-tank pump options supporting up to 1400+ horsepower
- Electrical hardware included



12-930	190 LPH In-Line Tank Street/Strip EFI Applications Compatible with Gasoline only
12-940	330 LPH Universal In-Line or In-Tank Fuel Pump Street/Strip EFI applications Compatible with Gasoline only
12-928	400 LPH In-Tank Street/Strip EFI Applications Compatible with Gasoline only
12-929	450 LPH E85/Gasoline In-Tank Street/Strip EFI Applications Compatible with Gasoline only
12-960	680 LPH Universal Dual In-Tank Pump
12-961	720 LPH Universal Dual In-Tank Pump - Street, Strip & Racing EFI Applications
12-931	2002-2004 Subaru WRX models compatible with Gasoline - 400 LPH In-Tank Electric Fuel Pump Street/Strip EFI Applications
12-932	1999-2004 Ford Lightning Compatible with Gasoline only - 255 LPH Dual In-Tank Fuel Pump Kit
12-933	1999-2004 Dodge Dakota and 1995-2003 Dodge Ram Pickups Compatible with Gasoline only - 255 LPH In-Tank Fuel Pump Kit
12-934	1994-1997 Mazda Miata Compatible with Gasoline only - 190 LPH In-Tank Fuel Pump Kit
12-935	1994-1997 Mazda Miata Compatible with Gasoline only - 255 LPH In-Tank Fuel Pump Kit
12-936	1990-1997 Dodge Stealth, Eagle Talon, Plymouth Laser, and Mitsubishi Eclipse/3000GT TT Compatible with Gasoline only - 255 LPH Forced Induction In-Tank Fuel Pump Kit
12-937	1984-1992 Toyota Supra Compatible with Gasoline only - 255 LPH In-Tank Fuel Pump Kit
12-938	1994-1998 Toyota Supra Compatible with Gasoline only - 255 LPH In-Tank Fuel Pump Kit
12-939	1994-1998 Toyota Supra Turbo models Compatible with Gasoline only - 255 LPH In-Tank Fuel Pump Kit
12-941	1986-1988 Mazda RX-7 models Compatible with Gasoline only - 255 LPH In-Tank Fuel Pump Kit
12-942	1994-1997 Mazda RX-7 models Compatible with Gasoline only - 255 LPH In-Tank Fuel Pump Kit

HOLLEY EQUIPPED BILLET FUEL CELL CAPS

- Compatible with Jaz, Harwood or RCI fuel cells
- CNC machined from 6061-T6 billet aluminum
- Stainless steel hardware included
- Bright black anodized for great looks

241-226	Billet fuel cell cap - 6-Bolt Flange
241-227	Billet fuel cell cap - 12-Bolt Flange
241-228	Billet fuel cell cap - Aluminum weld bung
241-229	Billet fuel cell cap - Steel weld bung
241-230	Billet fuel cell cap - 4-Bolt Flange



LS TALL VALVE COVERS

- Angled coil mounts deliver a smooth clean look
- Retain the high-tech look and performance of "coil on cover"
- Eliminates unsightly OE style coil brackets
- Fits all LS engines using LS1, LS2, LS3, LS6 and LS7 or similar coils with spacing 72mm bolt spacing
- Designed to add an additional 0.54" of internal clearance over factory height valve covers
- Available in polished, satin black, gloss red and natural cast

241-110	Aluminum Tall LS Valve Covers - Natural Cast
241-111	Aluminum Tall LS Valve Covers - Polished
241-112	Aluminum Tall LS Valve Covers - Satin Black
241-113	Aluminum Tall LS Valve Covers - Gloss Red



LS WATER PUMPS

P/N 22-100 Holley Standard & Middle Alignment Water Pump

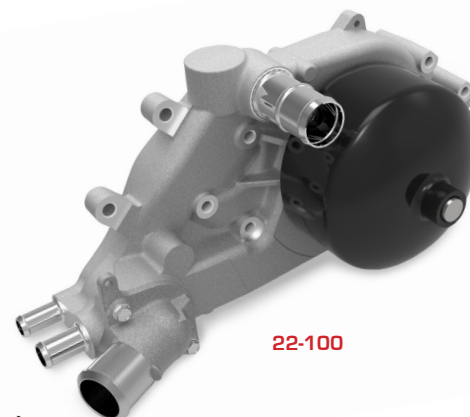
- Fits all LS engine blocks
- Forward facing water inlet
- Works with standard (Corvette type) belt spacing
- Works with middle (F-body type) belt spacing
- OE applications include: All LS1/LS6 Corvette/Camaro/Firebird

P/N 22-101 Holley Long Alignment Water Pump (with forward facing water inlet)

- Forward inlet allows truck swap engines to be installed in low hood vehicles
- Allows original truck accessories to be used in swap applications
- Fits all LS engine blocks
- Works with long (truck type) belt spacing

P/N 22-102 Holley Long Alignment Truck Water Pump (with upward facing water inlet)

- Fits all LS engine blocks
- Short upward facing water inlet
- Works with long (truck type) belt spacing
- OE applications include: All LS equipped truck applications



22-100

LS WATER PUMP AN INLET/OUTLET KIT

- Adapts inlet and outlet to -20 AN
- Upgrades earlier LS water pumps to the less restrictive late model thermostats
- Billet aluminum and stainless steel components
- Anodized protection on aluminum components
- Works with all LS water pumps (requires thermostat upgrade on early LS water pumps)



NOTE: Requires tig welding

LS0005ERL LS water pump to -20AN adapter kit

ADJUSTABLE LS STEAM TUBE ADAPTERS

- Seals to engine with captured FMK O-ring
- Adjustable fitting and hose plumbing path
- Upsized from OE tube sizing to -3 or -4 AN
- Can be used for front only or front/rear applications

LS9804ERL -4 single out (one pair)

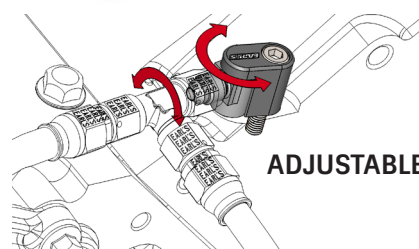
LS9805ERL -4 dual out (one pair)

LS9806ERL (One) -4 single out and (one) -4 dual out

LS9807ERL -3 single out (one pair)

LS9808ERL -3 dual out (one pair)

LS9809ERL (One) -3 single out and (one) -3 dual out



ADJUSTABLE

LS ACCESSORY DRIVE REPLACEMENT PARTS

97-154 Small power steering pump pulley (use with underdrive balancer)

97-170 Replacement Hardware kit for 20-131 & 20-136

97-171 Replacement Hardware kit for 20-132, 20-137, & 20-138

97-172 Replacement Hardware kit for 20-133 & 20-140

97-173 Replacement Hardware kit for 20-134, 20-141, & 20-142

97-174 Replacement Hardware kit for 20-135 & 20-143



97-170



97-171



97-154

VINTAGE SMALL BLOCK CHEVY AIR CLEANERS AND VALVE COVERS

AIR CLEANERS:

- 14" in diameter and are constructed of die-cast aluminum
- Available in both 3" and 4" heights to ensure proper fitment
- Also available with either paper (white) or premium cotton gauze (red) filter elements
- Include color-matched SureFlo style bases with knock out provisions for a fresh air adapter, which is also included.

VALVE COVERS:

- Designed to fit all 1958-86 small block Chevrolet engines with perimeter bolt patterns
- Die-cast aluminum construction ensures high detail and reduces the opportunity for warping of the valve cover flange and oil leaks
- Stand 3.5" tall with pre-installed internal oil baffles. The oil fill and PCV grommets are also included.



120-150	Air cleaner w/ 14x3 paper filter, polished
120-151	Air cleaner w/ 14x3 premium filter, polished
120-152	Air cleaner w/ 14x3 paper filter, black
120-153	Air cleaner w/ 14x3 premium filter, black
120-154	Air cleaner w/ 14x4 paper filter, polished
120-155	Air cleaner w/ 14x4 premium filter, polished
120-156	Air cleaner w/ 14x4 paper filter, black
120-157	Air cleaner w/ 14x4 premium filter, black
120-158	Air cleaner w/ 14x3 paper filter, raw
120-159	Air cleaner w/ 14x4 paper filter, raw
120-160	Air cleaner w/ 14x3 premium filter, raw
120-161	Air cleaner w/ 14x4 premium filter, raw
241-240	SBC valve covers w/ emissions, raw
241-241	SBC valve covers w/ emissions, polished
241-242	SBC valve covers w/ emissions, black
241-243	SBC valve covers w/o emissions (no oil-fill provisions), raw
241-244	SBC valve covers w/o emissions (no oil-fill provisions), polished
241-245	SBC valve covers w/o emissions (no oil-fill provisions), black

VAPOR-GUARD HOSE AND HOSE ENDS

- Alleviates permeation issue prominent in traditional neoprene & rubber fuel hoses
- Easy to use push-on style hose and fittings, plumbs most fuel systems within minutes
- A rubber hose that will hold up to the corrosive properties of modern day fuels, including E85
- High quality looks with AN style hose ends and adapters



**STOP FUEL VAPORS
& FUEL WEEPING
TODAY!**



HOSE ENDS

750156ERL	-6 straight to 5/16" hose end
750166ERL	-6 straight to 3/8" hose end
754156ERL	-6 45 degree to 5/16" hose end
754166ERL	-6 45 degree to 3/8" hose end
759156ERL	-6 90 degree to 5/16" hose end
759166ERL	-6 90 degree to 3/8" hose end
785056ERL	9/16-18 male port straight to 5/16 hose end
785066ERL	9/16-18 male port straight to 3/8 hose barb
781652ERL	1/8 NPT male straight to 5/16 hose end
781662ERL	1/8 NPT male straight to 3/8 hose end
781605ERL	1/4 NPT male straight to 5/16 hose end
781606ERL	1/4 NPT male straight to 3/8 hose end
781656ERL	3/8 NPT male straight to 5/16 hose end
781666ERL	3/8 NPT male straight to 3/8 hose end
782252ERL	1/8 NPT male 90 degree to 5/16 hose end
782262ERL	1/8 NPT male 90 degree to 3/8 hose end
782205ERL	1/4 NPT male 90 degree to 5/16 hose end
782206ERL	1/4 NPT male 90 degree to 3/8 hose end
782256ERL	3/8 NPT male 90 degree to 5/16 hose end
782266ERL	3/8 NPT male 90 degree to 3/8 hose end
782405ERL	3 way 5/16 barb
782406ERL	3 way 3/8 barb

HOSES

750055ERL	5/16 I.D. hose - bulk (sold by the foot)
750066ERL	3/8 I.D. hose - bulk (sold by the foot)
751055ERL	10' pre cut of 5/16 I.D. hose
751066ERL	10' pre cut of 3/8 I.D. hose
752055ERL	20' pre cut of 5/16 I.D. hose
752066ERL	20' pre cut of 3/8 I.D. hose
750000ERL	Oetiker clamp pliers
750005ERLP	5/16" hose clamp screw type
750006ERLP	3/8" hose clamp screw type
750007ERLP	5/16" hose clamp screw type
750008ERLP	3/8" hose clamp screw type
750009ERLP	5/16" hose clamp 1 ear crimp type
750010ERLP	3/8" hose clamp 1 ear crimp type
750011ERLP	5/16" hose clamp 2 ear crimp type
750012ERLP	3/8" hose clamp 2 ear crimp type

TRANSMISSION COOLER LINE ADAPTERS

There are always clearance challenges when doing an engine swap. One of these is routing the transmission cooler lines off the side of the transmission while cleaning the trans tunnel. Earl's makes this easier with their line adapters. Integrating into the GM transmission and adapting to AN lines allows additional clearance and freedom that the original hard lines cannot. Adapters are available for the popular 4L60E, 4L80E, TH350, TH400 and 700R4 transmissions.

NOTE: to adapt 4L80E, two part numbers are required 961980ERL & 961981ERL OR 961982ERL & 961983ERL depending on application. 940006ERL comes with both adapters needed for its applications.



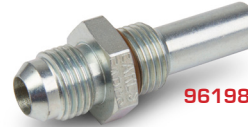
940006ERL



961980ERL



961982ERL



961983ERL



961981ERL

961980ERL	-6AN male to 1/4"-18 NPSM Short trans cooler adapter (steel) 4L80E transmission line adapters to -6AN (more common 1/4"-18NPSM (post "97") Short (front)
961981ERL	-6AN male to 1/4"-18 NPSM Long trans cooler adapter (steel) 4L80E transmission line adapters to -6AN (more common 1/4"-18NPSM (post "97") Long (rear)
961982ERL	-6AN male to 9/16"-18 Short trans cooler adapter (steel) 4L80E transmission line adapters to -6AN (Newer GM 9/16-18, some 2009 and later) Short (front)
961983ERL	-6AN male to 9/16"-18 Long trans cooler adapter (steel) 4L80E transmission line adapters to -6AN (Newer GM 9/16-18, some 2009 and later) Long (rear)
940006ERL	-6AN male to 1/4"-18 NPSM Short trans cooler adapter (steel) Trans adapt for use with 4L60E, TH350, TH400 or 700R4 - pack of 2 with crush washers

HOSE & TUBING SEPARATORS

Earl's is proud to offer the state-of-the-art in plumbing hardware for professionals and serious enthusiasts. Crafted from 6061-T6 billet aluminum alloy, these clamps are the finest available to finish off a professional plumbing installation. For separating, isolating, and securing fuel lines, brake lines, & brake hoses. Earl's has the widest selection available to finish off your engine compartment.

167503ERL	3/16", Package of 3 - Black Anodized
167504ERL	1/4", Package of 3 - Black Anodized
167505ERL	5/16", Package of 3 - Black Anodized
167506ERL	3/8", Package of 2 - Black Anodized
167507ERL	7/16", Package of 2 - Black Anodized
167508ERL	1/2", Package of 2 - Black Anodized
167509ERL	9/16", Package of 2 - Black Anodized
167510ERL	5/8", Package of 2 - Black Anodized
167511ERL	11/16", Package of 2 - Black Anodized
167512ERL	3/4", Package of 2 - Black Anodized
167513ERL	13/16", Package of 2 - Black Anodized
167514ERL	7/8", Package of 2 - Black Anodized
167516ERL	1", Package of 2 - Black Anodized
167519ERL	1 7/32", Package of 2 - Black Anodized
167522ERL	2 1/32", Package of 2 - Black Anodized



**AVAILABLE IN
RED, BLUE ANODIZED
AND POLISHED!**

SPEED-SEAL HOSE ENDS

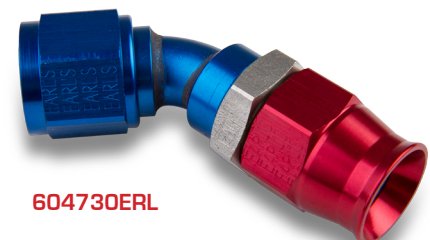
- Reliable and reusable
- Unmatched range-configurations
- Excellent pressure capacity
- Use with Earl's Speed Flex smooth bore PTFE hose only
- Impervious to any fuel blend

**NOW AVAILABLE
IN -10AN SIZE!**

600130ERL	Straight, aluminum tube, adjustable - 10AN
AT600130ERL	Straight, Ano-tuff aluminum tube, adjustable - 10AN - Black
604530ERL	45°, aluminum low-profile tube, adjustable - 10AN
AT604530ERL	45°, Ano-tuff aluminum low-profile tube, adjustable - 10AN - Black
604730ERL	45°, aluminum tube, adjustable - 10AN
AT604730ERL	45°, Ano-tuff aluminum tube, adjustable - 10AN - Black
609030ERL	90°, aluminum low-profile tube, adjustable - 10AN
AT609030ERL	90°, Ano-tuff aluminum low-profile tube, adjustable - 10AN - Black
609230ERL	90°, aluminum tube, adjustable - 10AN
AT609230ERL	90°, Ano-tuff aluminum tube, adjustable - 10AN - Black
612130ERL	120°, aluminum tube, adjustable - 10AN
AT612130ERL	120°, Ano-tuff aluminum tube, adjustable - 10AN - Black
618130ERL	180°, aluminum tube, adjustable - 10AN
AT618130ERL	180°, Ano-tuff aluminum tube, adjustable - 10AN - Black



AT600130ERL



604730ERL

SPEED-FLEX HOSE

- Extruded PTFE
- Stainless Steel Outer Braid
- 1000 maximum PSI pressure
- Improved Abrasion Resistance
- Increased Temperature Capacity
- Impervious To Any Fuel Blend
- Carbon Lined for Static Dissipation
- -65° to +450° F Operating Temperature
- Easy to cut and assemble
- Accepts Speed-Seal Hose Ends Only



**NOW AVAILABLE
IN -10AN SIZE!**

600010ERL	- 10, .03" wall, Carbon lined, Max. PSI 1000, bulk
610010ERL	- 10, .03" wall, Carbon lined, Max. PSI 1000, 10ft length
620010ERL	- 10, .03" wall, Carbon lined, Max. PSI 1000, 20ft length
633010ERL	- 10, .03" wall, Carbon lined, Max. PSI 1000, 33ft length



ADAPTERS

903201ERL	Steel plug pipe 1/8" NPT, internal wrenching
918112ERL	-12 180° bent tube, B nut to B nut, 1.50 bend radius
984066ERL	Straight 3/8" hose barb to 3/8" NPT
984068ERL	Straight 3/8" hose barb to 1/2" NPT
984088ERL	Straight 1/2" hose barb to 1/2" NPT
985812ERL	-12 AN port to -8 AN male
AT984066ERL	Ano-tuff Straight 3/8" hose barb to 3/8" NPT
AT984068ERL	Ano-tuff Straight 3/8" hose barb to 1/2" NPT
AT984088ERL	Ano-tuff Straight 1/2" hose barb to 1/2" NPT
AT985812ERL	Ano-tuff -12 AN port to -8 AN male
AT985108ERL	Ano-tuff -8 AN port to -8 AN port
AT985109ERL	Ano-tuff -10 AN port to -8 AN port
AT985110ERL	Ano-tuff -10 AN port to -10 AN port
AT985111ERL	Ano-tuff -10 AN port to -12 AN port
AT985112ERL	Ano-tuff -12 AN port to -12 AN port
AT165206ERL	Ano-tuff 3/8" hard line to 3/8" NPT
AT165256ERL	Ano-tuff 5/16" hard line to 3/8" NPT
961961ERL	LS power steering pump to AN -6 adapter/extension
961965ERL	3/8" male quick connect to -6AN male
9616SVERL	1/8" NPT Male Schrader Valve



AT984008ERL



AT985812ERL



961961ERL

ECON-O-FIT HOSE CLAMPS

Econ-O-Fit is the original anodized aluminum hose clamp cover. It's appearance dresses up any installation. Econ-O-Fit's specially designed interior grooving prevents the hose from "hanging up" on the clamp and ensures proper placement of the worm gear type clamp with respect to the end of the hose.

900518ERL	-18 Econ-O-Fit I.D. 1-3/8", Fits Perform/ Auto-O-Flex Hose Size 16 or 18, Hose I.D. 7/8"-1" - Black
900520ERL	-20 Econ-O-Fit Size 20, Econ-O-Fit I.D. 1-1/2", Fits Perform-O-Flex/Auto-O-Flex Hose Size 20, Hose I.D. 1-1/8" - Black
900524ERL	-24 Econ-O-Fit Size 24; Econ-O-Fit I.D. 1-3/4"; Fits Perform-O-Flex/ Auto-O-Flex Hose Size 24; Hose I.D. 1-3/8" - Black
900528ERL	-28 Econ-O-Fit I.D. 1-15/16", Fits Perform-O-Flex/Auto-O-Flex Hose Size 28, Hose I.D. 1-1/2" - Black
900532ERL	-32 Econ-O-Fit Size 32, Econ-O-Fit I.D. 2-3/16", Fits Perform-O-Flex/ Auto-O-Flex Hose Size 32, Hose I.D. 1-3/4" - Black
900534ERL	-34 Econ-O-Fit Size 34, Econ-O-Fit I.D. 2-5/16" - Black
900536ERL	-36 Econ-O-Fit Size 36, Econ-O-Fit I.D. 2-3/8" - Black



POWER STEERING HOSE

- Meets Tough Power Steering Requirements
- Triple Steel & Fabric Reinforced
- Also Suitable For Hydraulics & Air Lines
- 2,250 PSI Operating Pressure
- Sold per foot

**NOW IN
BLACK!**



150006ERL	- 6 Min. Bend Radius 4 in., Max. PSI 2250, Bulk
150606ERL	- 6 Min. Bend Radius 4 in., Max. PSI 2250, 6ft length
151006ERL	- 6 Min. Bend Radius 4 in., Max. PSI 2250, 10ft length
152006ERL	- 6 Min. Bend Radius 4 in., Max. PSI 2250, 20ft length

POWER STEERING HOSE ENDS

- Meets Power Steering Demands
- Suitable For Hydraulic Lines
- Suitable For Air Lines
- Black Chromate

150106ERL	- 6 JIC Straight Female Thread Size .5625 To 18, Black Chromate
154606ERL	- 6 JIC 45 Female Thread Size .5625 To 18 - Black Chromate
159106ERL	- 6 JIC 90 Female Thread Size .5625 To 18- Black Chromate Finish
133666ERL	Replacement Socket Power Steering End



150106ERL



159106ERL

ANO-TUFF SUPER STOCK HOSE ENDS

- Popular and Economical Option For O.E. Replacement Hose Assemblies
- A Direct Replacement For The Brass Push Lock Type
- Common Configurations Available
- Machined From Aluminum Alloy

AT720142ERL	1/4" ID St. Super Stock to 1/8" NPT
AT720164ERL	3/8" ID St. Super Stock to 1/4" NPT
AT720186ERL	1/2" ID St. Super Stock to 3/8" NPT
AT720111ERL	5/8" ID St. Super Stock to 1/2" NPT
AT720113ERL	3/4" ID St. Super Stock to 3/4" NPT



QUICK CONNECT FITTINGS

Earl's continues to lead in late model product applications with additional adapters for popular GM, Ford and Chrysler fuel lines. All Earl's fuel quick connects rely exclusively on metal retainers. No plastic clips here! Adapter bodies are 2024 aluminum (not cheaper 6061) and stainless steel. These fuel adapters will not fail over your HOT engine. New are versions of the popular 3/8" quick connects that have a port for your fuel gauge. There is even an in-line adapter that allows the addition of a fuel gauge port to a stock application in minutes. Just click-click. Added to the 3/8" quick connects are new 5/16" version common on return lines.

992006ERL	- 6 to 3/8" quick connect with 1/8" NPT nipple
992086ERL	- 8 to 3/8" quick connect with 1/8" NPT nipple
AT992006ERL	- 6 to 3/8" quick connect with 1/8" NPT nipple - Ano-tuff
AT992086ERL	- 8 to 3/8" quick connect with 1/8" NPT nipple - Ano-tuff
961966ERL	3/8" male to 3/8" female quick connect with 1/8" NPT
961965ERL	3/8" male quick connect to -6 AN male
991965ERL	-6AN to 5/16" quick connect fuel fitting
AT991965ERL	-6AN to 5/16" quick connect fuel fitting - Ano-tuff



961966ERL



992086ERL

AN FITTING ADJUSTABLE WRENCH

- Made of 7075-T351 Military Grade Aluminum to achieve maximum durability while keeping the weight at a minimum
- Weighs only 6.5oz
- Anodized Black with Steel Nickel knurled adjustment wheel making it attractive and functional
- Curved Lower jaw and chamfered nose for clearance in tight spots
- Each component is machined to Earl's tolerances making for high quality, precise feel and function
- Use of two Belleville washers and one spring washers inside of adjustment wheel to maintain correct torque and tension to close up any remaining gaps

**ADJUSTS FROM
-3 TO -16 SIZES!**



230400ERL Adjustable AN fitting wrench

OIL FILLED 100 PSI PRESSURE GAUGE

- Design meets or exceeds ASME B40.100 pressure gauge standard
- Ideal for use in applications where vibration or pulsation is present
- Glycerine filled for added durability

100187ERL Oil-filled 100 PSI pressure gauge



BRAKE LIGHT SWITCH

The switch has male bullet terminals for easy, two-wire hook up. It is commonly used with under-floor mounted brake pedal assemblies.

100186ERL Brake light switch, male 2 Terminal, 1/8" NPT



SHUT-OFF VALVES

- Emergency Fuel Shut-Off
- Ideal as Anti-Theft Device
- Ideal for Drain Valve

230507ERL	1/2" NPT Brass Shut-Off Valve
230509ERL	3/8" NPT Brass Shut-Off Valve



230507ERL



230509ERL

MALE DISTRIBUTION BLOCK

- Hard anodized aluminum for wear and corrosion resistance
- Made in the USA
- Provides an aggressive look
- Last twice as long as traditional anodized fitting



AT100169ERL -10 Male to -8 male distribution block

1978-87 A/G-BODY EXHAUST SYSTEMS & ADAPTER KITS

- 42511HKR** 1978-87 GM A/G-Body exhaust system
- 2.5", Natural Finish Stainless Steel
- 42512HKR** 1978-87 GM A/G-Body exhaust system
- 3", Natural Finish Stainless Steel
- 42118HKR** 1978-88 A/G-body adapter tube, Hooker
LS Swap Long-Tube Headers to 2.5"
Exhaust Systems



1978-87 A/G-BODY TAILPIPE KITS

- 42804HKR** 1978-88 GM G-Body, 2.5" Rear Exit
Monte Carlo SS Style
- 42805HKR** 1978-88 GM G-Body, 3" Rear Exit
Monte Carlo SS Style



42804HKR

42511HKR

FULL LENGTH & SHORTY HEADERS

- Perfect combination of quality and value!
- Primary tubes with 3" collectors for performance gains on stock and modified engines
- 3/8" steel flanges for durability
- Tube geometry designed for maximum ground clearance
- Polished 304 stainless steel primary tubes and collectors with quality TIG welds for strength, longevity, and great looks



11135FLT



CHEVROLET

11135FLT 2010-2015 Chevrolet Camaro SS: 6.2L Tube Size 1-7/8", Collector Size 3", w/ Oxygen Sensor Fittings
- Polished stainless steel full length headers

11136FLT 2010-2015 Chevrolet Camaro SS: 6.2L Tube Size 1-7/8", Collector Size 3", Full length headers w/ Off-Road X & Mid-Pipes & Oxygen Sensor Fittings
- Polished Stainless Steel

11139FLT 1997-2004 Chevrolet Corvette: 5.7L Tube Size 1-7/8", Collector Size 3", w/ Oxygen Sensor Fittings
- Polished stainless steel full length headers

11140FLT 1997-2004 Chevrolet Corvette: 5.7L Tube Size 1-7/8", Collector Size 3", Full length headers w/ Off-Road X & Mid-Pipes & Oxygen Sensor Fittings
- Polished Stainless Steel

FORD/DODGE/CHRYSLER

12117FLT 1979-93 For Mustang 5.0L Tube Size 1-3/4", Collector Size 2-1/2" - Polished stainless steel shorty headers

12130FLT 2005-10 For Mustang 4.0L V6 Tube Size 1-1/2", Collector Size 2-1/2" - Polished stainless steel shorty headers

13131FLT 2006-14 Dodge Charger/ Challenger/ Magnum/ Chrysler 300C SRT8: 6.1/6.4L Tube Size 1-7/8", Collector Size 3", Full length headers w/ Oxygen Sensor Fittings

13132FLT 2006-14 Dodge Charger/ Challenger/ Magnum/ Chrysler 300C SRT8: 6.1/6.4L Tube Size 1-7/8", Collector Size 3", Full length headers w/ Oxygen Sensor Fittings, w/ Off-Road Pipes to Connect to Factory Exhaust

**SEE ALL THE
NEW HEADERS AT
FLOWTECHHEADERS.COM!**



12117FLT

NOSTALGIC BLOWER KITS

- 175-275+ Horsepower increases (6-71)
- 200-300+ Horsepower increases (8-71)
- Kits for Small and Big Block Chevrolet and 392 Hemi (6-71 only)
- Option of traditional 1/2" pitch (6-71 only) or 8mm belt drive
- Available polished or unpolished

SMALL BLOCK CHEVY

7582	6-71 1/2" pitch drive - satin
7582P	6-71 1/2" pitch drive - polished
7587	6-71 3" Gilmore drive, Long nose - satin
7587P	6-71 3" Gilmore drive, Long nose - polished
7385	8-71 3" Gilmore drive, Long nose - satin
7385P	8-71 3" Gilmore drive, Long nose - satin

BIG BLOCK CHEVY

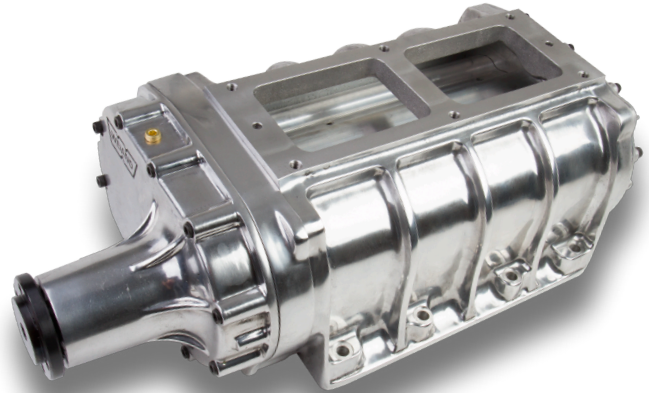
7583	6-71 1/2" pitch drive - satin
7583P	6-71 1/2" pitch drive - polished
7588	6-71 3" Gilmore drive, Long nose - satin
7588P	6-71 3" Gilmore drive, Long nose - polished
7386	8-71 3" Gilmore drive, Long nose - satin
7386P	8-71 3" Gilmore drive, Long nose - polished

HEMI

7581	6-71 1/2" pitch drive, 392 HEMI - satin
7581P	6-71 1/2" pitch drive, 392 HEMI - polished

SERVICE PARTS

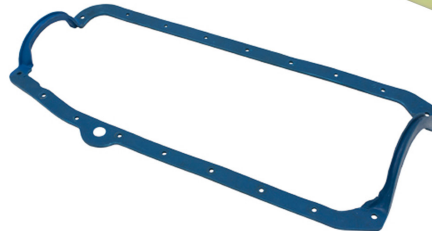
7576	Case assembly, 6-71 - satin
7576P	Case assembly, 6-71 - polished



FABRICATED OIL PAN KITS

- Save time and aggravation with these money-saving fabricated oil pans!
- Everything you need to get the job of changing an oil pan done right!
- Application specific oil pans
- Oil pan gasket
- Oil pump pickup
- Pan mounting bolt kit

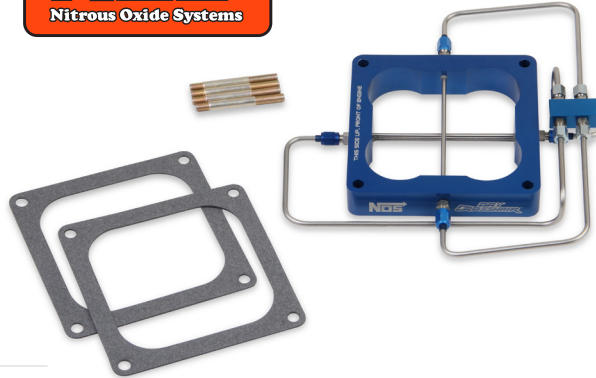
**AVAILABLE FOR GM LS,
SMALL BLOCK CHEVY &
SMALL BLOCK FORD
DRAG RACING APPLICATIONS!**



NOS DRY PLATE NITROUS KITS

1 STAGE, DRY CROSSHAIR PLATE DOMINATOR FLANGE
PROFESSIONAL KIT - **02156NOS**

- Capable of 100 to 500+ HP (Jetting sold separately)
- Comes with blue anodized, Dry Crosshair plate in Holley 4500 bolt-pattern
- Includes pre-plumbed, custom, hand-bent, stainless steel, hard lines & fittings
- Features signature Crosshair double down nitrous bars for improved distribution & atomization
- Specifically designed for easy integration with HOLLEY EFI
- Compatible with any NOS brand solenoids (NOS Super Big Shot-18010NOS Solenoid Recommended)
- Includes plate mounting hardware & gaskets
- Perfect for Drag Racing classes restricting nitrous usage to a single-stage plate.



2 STAGE, DRY CROSSHAIR PLATE DOMINATOR FLANGE
PROFESSIONAL KIT - **02157NOS**

- Capable of 100 to 600+ HP (Jetting sold separately)
- Comes with blue anodized Dry Crosshair plate in Holley 4500 bolt-pattern
- Includes pre-plumbed, custom, hand-bent, stainless steel, hard lines & fittings
- Features signature Crosshair double down nitrous bars for improved distribution & atomization
- Includes lightweight, blue anodized, aluminum solenoid mounting bracket
- Compatible with any bottom exit Nitrous Solenoids (NOS Pro-Race - 18048RNOS Solenoids Recommended - [sold separately])
- Specifically designed for easy integration with HOLLEY EFI
- Includes mounting hardware & gaskets



DRY CROSSHAIR PLATE DOMINATOR FLANGE
[PLATE ONLY] - **12667NOS**

- Includes same great-looking, blue anodized, 4500 series Dry Crosshair plate included in 1 & 2 Stage Dry Crosshair kits
- Features signature Crosshair double down nitrous bars for improved distribution & atomization
- Makes a great "a-la-carte" plate for the "do-it-yourself" racer wanting to configure their own dry nitrous plate for EFI use.



DRY BIG SHOT 4-BARREL PROFESSIONAL KIT - **02155NOS**

- Comes with 1/2" thick, blue anodized Dry Bigshot plate in Holley 4150 bolt pattern
- Includes jetting for 50, 75, 100, 125, 150 & 175HP (Capable of 250+ HP with additional jetting-sold separately)
- Includes NOS 18048R-SNOS or 18048RNOS Pro Race Solenoid & solenoid mounting bracket
- Includes all electrical wiring, relays, & connectors required for installation
- Includes all fittings, lines, & plugs required for installation
- Kit comes complete with 10lb nitrous bottle & bottle mounting brackets
- Specifically designed for easy integration with HOLLEY EFI



DRY BIG SHOT 4-BARREL PROFESSIONAL
[PLATE ONLY] - **12567NOS**

- Includes same great-looking, blue anodized, 4150 series Dry Bigshot plate included in Dry Bigshot 4-Barrel Professional kits
- Features a single 34 hole, nitrous spray-bar for improved distribution & atomization
- Makes a great "a-la-carte" plate for the "do-it-yourself" racer wanting to configure their own dry nitrous plate for EFI use.

